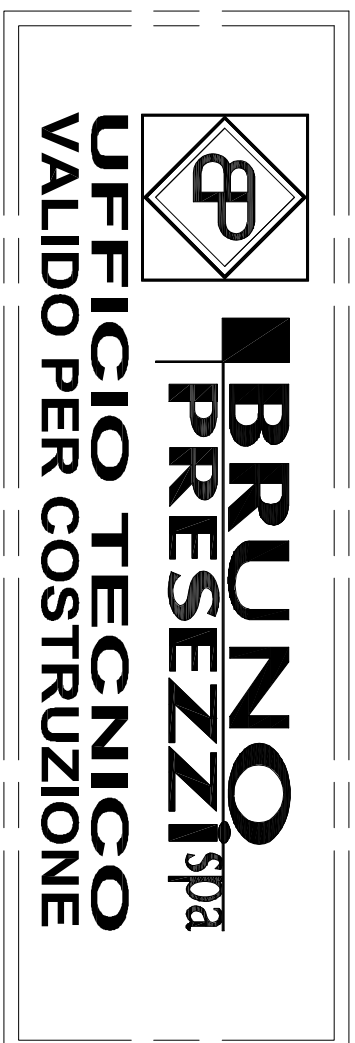
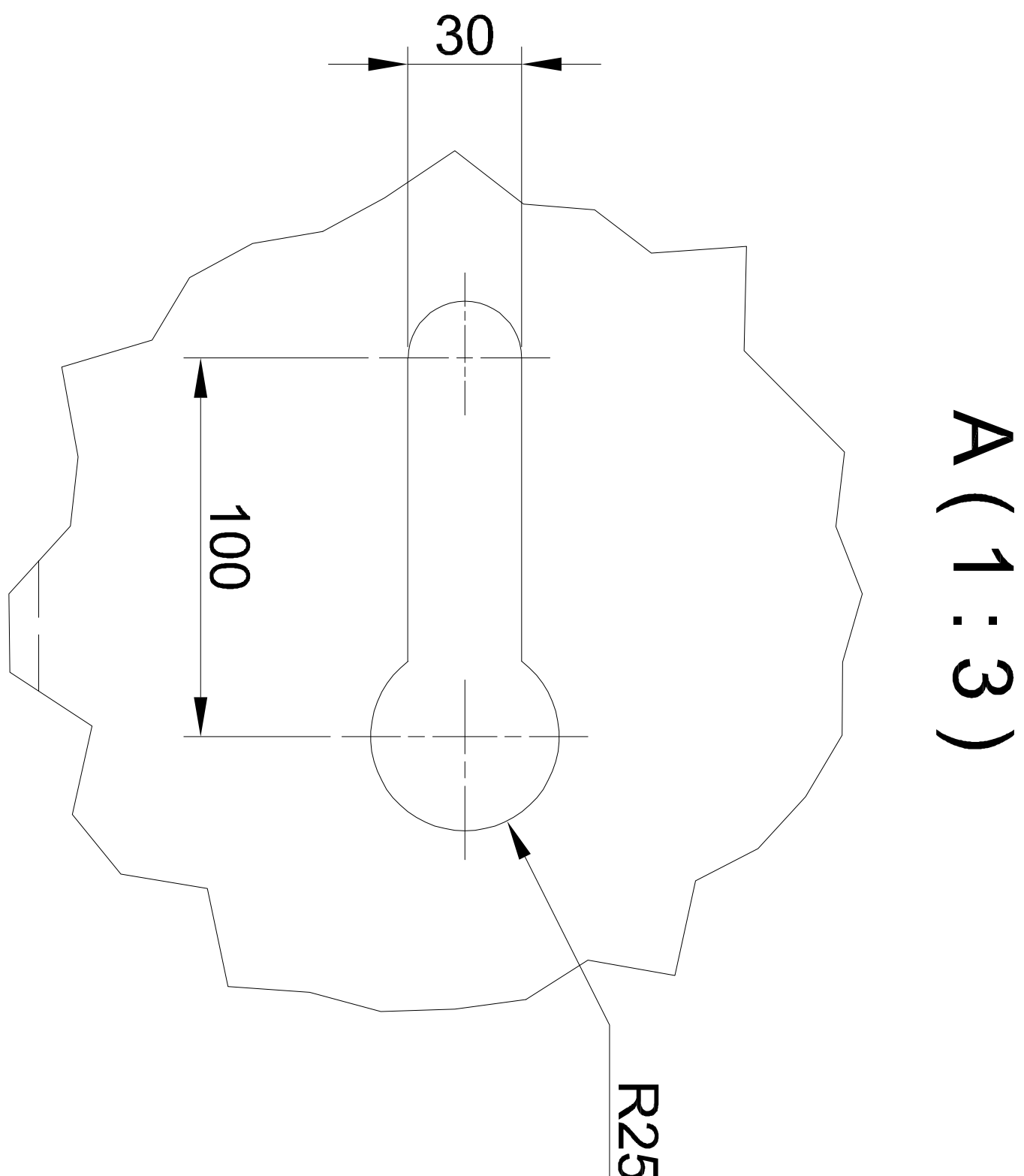
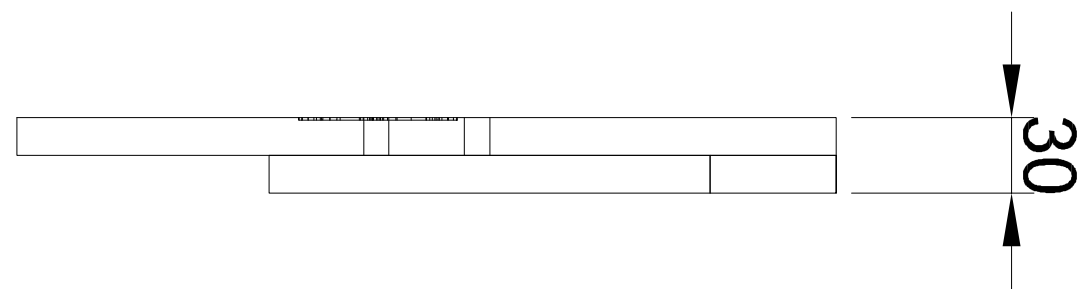
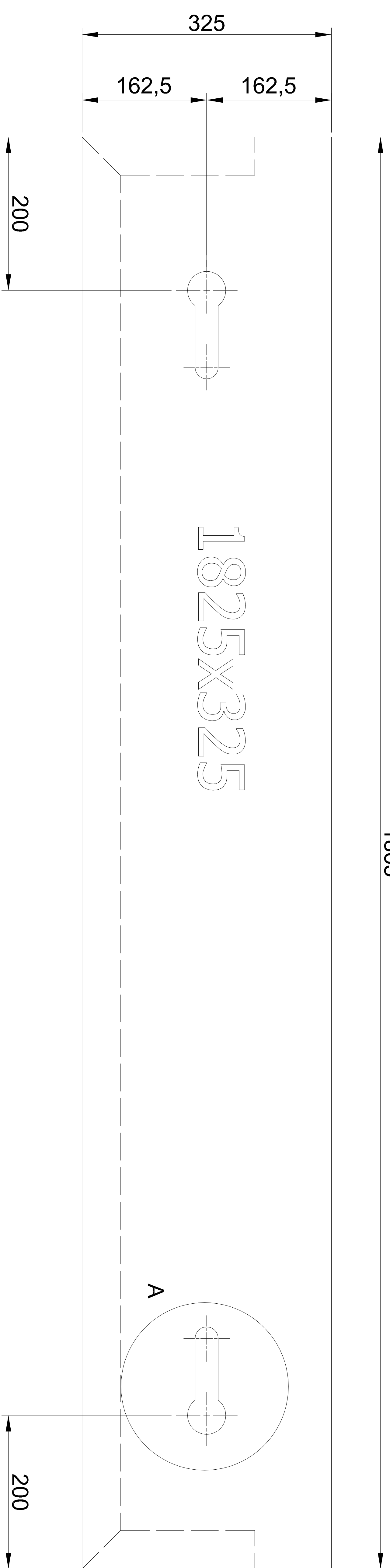
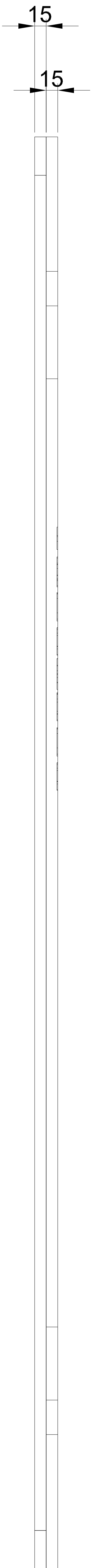
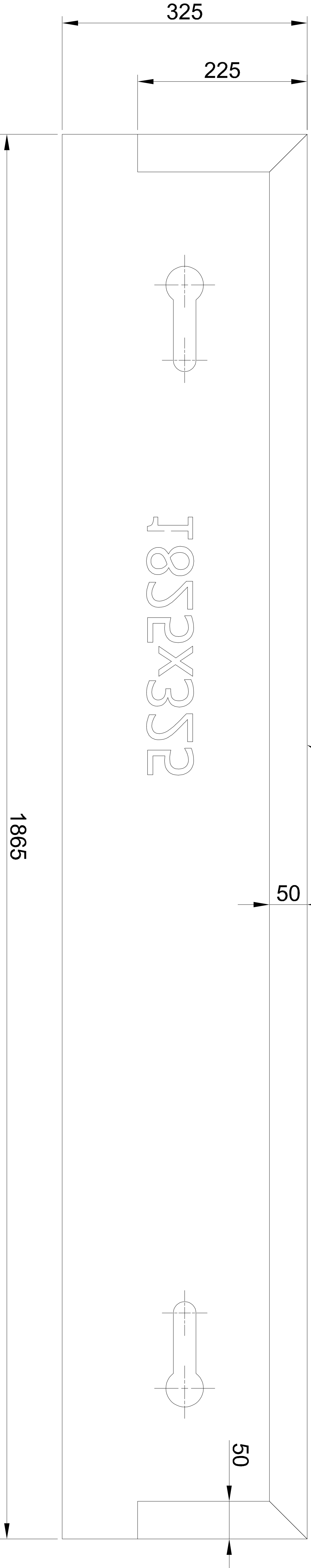
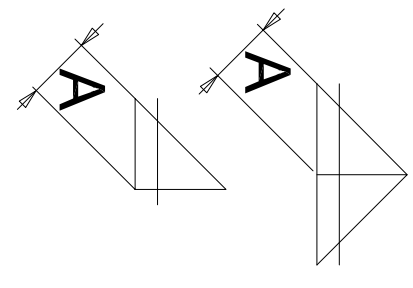


GENERAL MACHINING TOLERANCE - GRADE MEDIUM (UNI EN ISO 22768)													REMOVE SHARP EDGES TOGLIERE SPIGOLI VIVI			
TOLLERANZA GENERALE DI LAVORAZIONE - GRADO MEDIO (UNI EN ISO 22768)													Chamfer 0.5x45° R=0.5 Smusso			
Size	above	Gruppo di		oltre	-	6	30	120	400	1000	2000	4000				
	up to	dimension		fino a		6	30	120	400	1000	2000	4000				
Tolerance			Scostamenti			±0.1	±0.2	±0.3	±0.5	±0.8	±1.2	±2	±3			

- Profilato da 50 mm da saldare sul perimetro  
- 50 mm profile to be welded on the perimeter



**NORME GENERALI DI SALDATURA**  
**GENERAL RULES FOR WELDED JOINTS**  
PREPARAZIONE DEI LEMBI SECONDO "DIN 1912"  
EDGE PREPARATION FOR WELDING ACCORDING TO  
DOVE NON ALTRIMENTI INDICATO - A = 0,7  
DELO SPESSORE MINIMO DA COLLEGARE  
WHERE NOT SPECIFIED - A = 0.7  
OF THE MINIMUM THICKNESS TO BE JOINT



Q.TA'	DATA	COMMESSA N.	DIS. ASSIEME
	07/10/2025		
S.P.	R.V.	R.V.	
Disegnato	Verificato	Autorizzato	Materiale
Descrizione:			
Lamiera Sp.15+15 (Sheet Metal 15+15)			
Disegno N.		Scala: 1 : 6	
60-26-00B-130		Revisione: 0	
A termine di legge e' rigorosamente vietato riprodurre o comunicare a terzi il contenuto del presente disegno		Foglio: 1 di 1	
Via per Omega 8 - BIRAGO DI MOLICOPIA - C.A.P. 20875 (MB) - ITALY		A2	
Tel. 039635021 FAX 0398081973 - e-mail: bruno.prezzi@brunoprezzi.com			